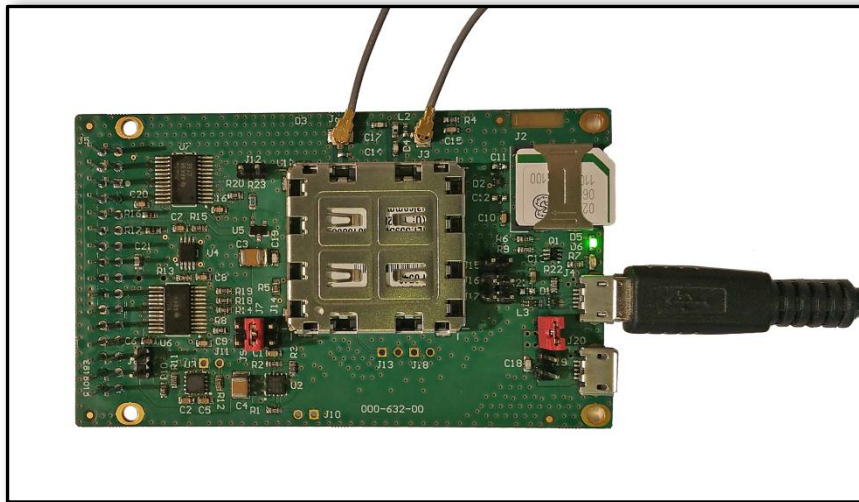


# wasp

wp application system



The Linkwave WasP is an evaluation board for the WP Series of Sierra Wireless AirPrime modules. It can also be used as an application and communication processing mezzanine board for more complex IoT systems.

Offering a Linux-based application host, the WasP will be available in 3G and LTE versions, supporting global network connectivity.

## Specification

<b>EMBEDDED WIRELESS MODULE</b>	Sierra Wireless WP Series AirPrime modules
<b>POWER INPUTS</b>	Board is 5V powered and has multiple power source options: micro USB OTG input   dedicated micro USB power input   via 32 pin 0.1" header   source configured via 0.1" jumpers
<b>POWER OUTPUTS</b>	3V3 1.5A independent from radio   3V7 radio supply
<b>CONNECTIONS</b>	32 pin header has user configured voltage translation on all IO – 1V8 to 5V operation. 3V3 OP   5V IP or OP   module supply OP or IP   SPI   I2C   UART1 5 wire   UART2 2 wire. <b>USB OTG connector:</b> can power the board when set as device   can be host and provide 5V to external device   in device mode, provides USB serial and CDC ECM network ports. <b>RF connection:</b> RF main U.FL   GNSS U.FL
<b>ANTENNA CONNECTORS</b>	2G/3G/4G antenna connector: U.FL GNSS antenna connector: U.FL
<b>FORM FACTOR</b>	The board's CF3 socket supports a range of AirPrime WP modules from Sierra Wireless.
<b>DIMENSIONS</b>	85mm x 50mm Single sided PCB