

# Sierra Wireless® RV55 Quick Start Guide

This guide provides instructions for quickly getting your Sierra Wireless® AirLink® RV55 router configured and connected. For more information refer to the:

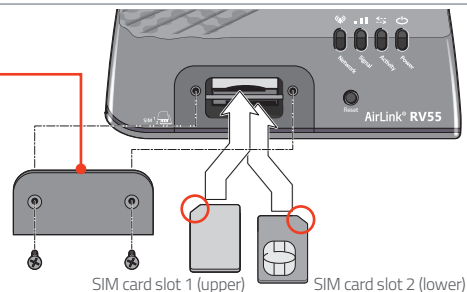
- AirLink RV55 Hardware User Guide
- AirLink RV55 Software Configuration User Guide

Both are available for download from the Sierra Wireless web site ([source.sierrawireless.com](http://source.sierrawireless.com)). Click **sign up** to register for free.

**NOTE:** Remote ACEmanager access is disabled by default for security. If required, enable it remotely using ALMS or locally using ACEmanager (Services > ACEmanager) and change the default password (Admin > Change Password).

## STEP 1 Install the SIM Cards

1. Use a #1 Phillips screwdriver to remove the SIM card cover.
2. Slide the SIM cards into the SIM card slots until they click into place.  
By default, the SIM card in slot 1 (the upper slot) is the Primary SIM card. When the RV55 is powered on or reboots, it automatically connects to the network associated with the Primary SIM card.
3. Re-attach the cover.

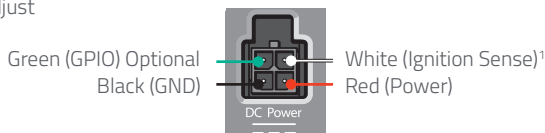
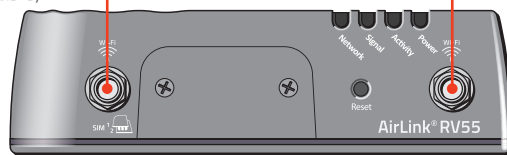
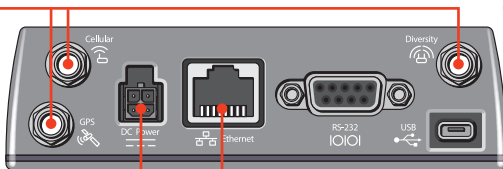


## STEP 2 Connect and Turn On the Router

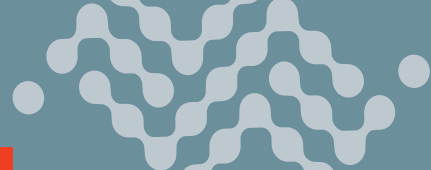
**NOTE:** If you want to configure all your routers at the same time using AirLink Management Service, follow the instructions on page 2 to register your routers before applying power.

Sierra Wireless strongly recommends that you always ground the chassis using the unpainted mounting hole. For more information, refer to the RV55 Hardware User Guide.

1. Connect Cellular, Diversity and GNSS antennas (if applicable).
2. Connect the Dual Wi-Fi antennas (if applicable).
3. Connect 9 – 36 VDC.  
To operate the router between 7 – 36 V, after startup, launch ACEmanager, go to Services > Power Management, and adjust the low voltage standby settings.
4. Connect a Windows® computer to the router with an Ethernet cable. If required by your application, connect the RS-232 port and/or the USB port.



1. If not using an AC adapter, Ignition Sense must be connected to vehicle ignition or the positive terminal of your power supply.



## STEP 3 Connect to the Network

When the router is powered on, a green LED chase may occur. This indicates that the radio module is being configured for your SIM card. The process can take 6–7 minutes.

Once the router's radio module is configured for the SIM card, it begins the activation/provisioning process and attempts to connect to the mobile network. This process takes a few minutes. A successful connection is indicated by a solid green Network LED. If the router does not automatically connect to the network, refer to the ALEOS Software Configuration User Guide (WAN/Cellular chapter).

## STEP 4 Connect to ACEmanager™

1. On a Windows computer connected to the RV55, enter **http://192.168.13.31:9191** in the web browser. The ACEmanager login screen appears.
2. The administrator user name is entered by default. Enter the default password (printed on the label on the base of the unit) and click Login. The Status > Home screen appears.  
**NOTE: For system security, please change the default password as soon as possible.**
3. Check the Network State field. It should read Network Ready, which indicates the router is connected to the network. If not, see **STEP 3 Connect to the Network**. For more information on configuring your router for power saving, refer to the ALEOS Software Configuration User Guide.

## STEP 5 Register for AirLink Complete

Every supported AirLink device includes the first year of AirLink Complete in the purchase price. AirLink Complete includes one year of access to Sierra Wireless Customer Support and AirLink Management System (ALMS). Customers must register their device(s) within 60 days of receipt of the device to claim the first year of AirLink Complete.

1. Go to **https://sierrawireless.com/complete/register** and log in or sign up for a new account.
2. Register your devices.  
For more information on AirLink Complete, please see **https://www.sierrawireless.com/products-and-solutions/routers-gateways/airlink-complete/**.

## STEP 6 Connect to AirLink Management Service (Optional)

You can remotely configure and monitor all your routers at the same time with ALMS, Powered by AirVantage.

**NOTE:** An ALMS account is required.

1. Using a web browser, log into your ALMS account.  
If you don't have an ALMS account, visit **www.sierrawireless.com/ALMS** for information on setting one up.
2. If you have not already done so, register your routers by following the instructions on the registration page.
3. Apply power to all your routers. ALMS completes the registration on power up.  
You are now ready to use ALMS to configure your routers.

## Sierra Wireless Contact Information

**Sales information and technical support,  
including warranty and returns**

Web: [sierrawireless.com/company/contact-us](http://sierrawireless.com/company/contact-us)  
Global toll-free number: 1-877-687-7795

**Corporate and product information**

Web: [sierrawireless.com](http://sierrawireless.com)